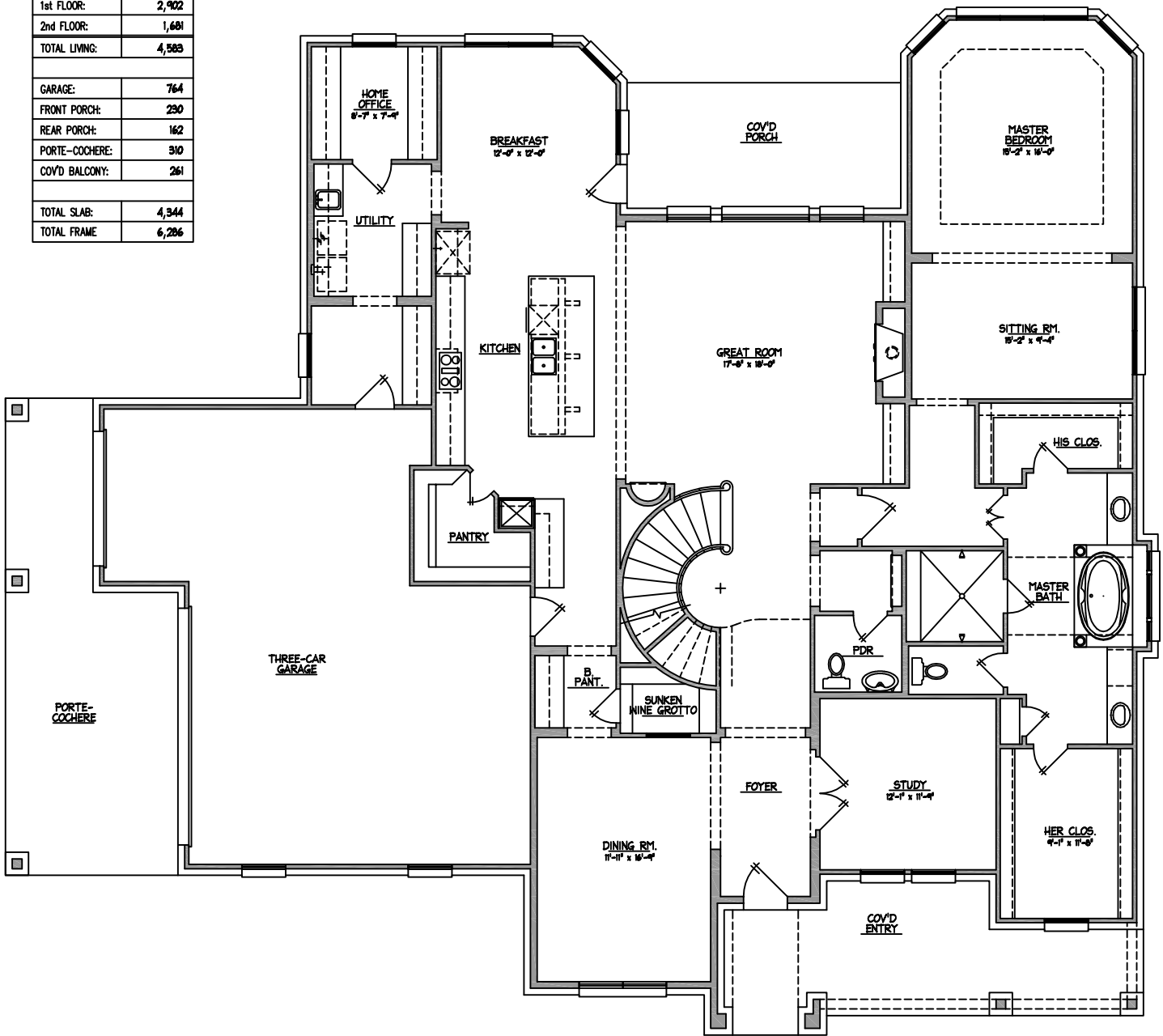


# THE BRADFORD

SIDE LOAD OPTION

## SQUARE FOOTAGE SUMMARY

1st FLOOR:	2,902
2nd FLOOR:	1,681
TOTAL LIVING:	4,583
GARAGE:	764
FRONT PORCH:	230
REAR PORCH:	162
PORTE-COCHERE:	310
COVID BALCONY:	261
TOTAL SLAB:	4,344
TOTAL FRAME:	6,286



○ FIRST FLOOR PLAN  
SIDE LOAD OPTION