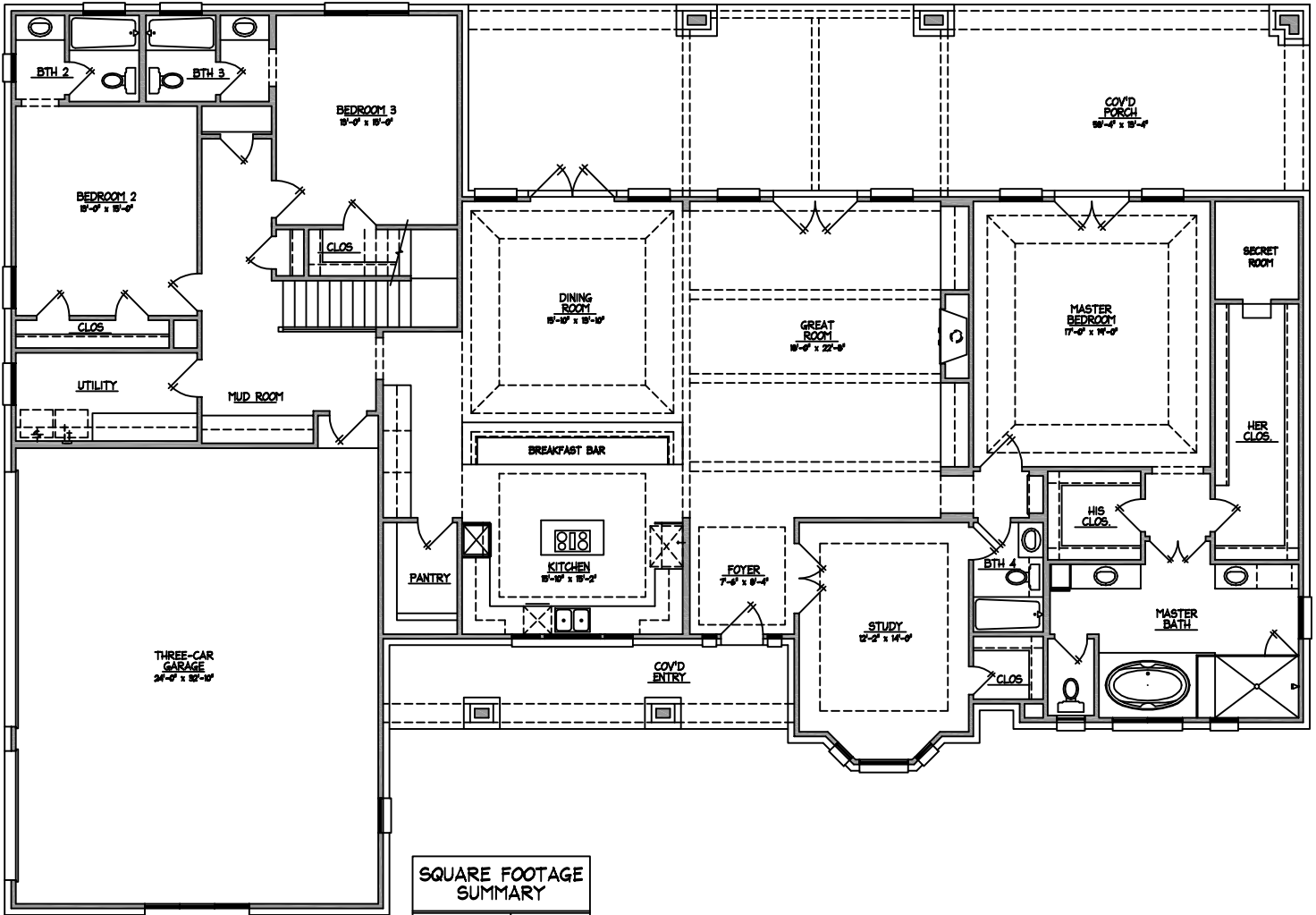


# THE MADELYN



### SQUARE FOOTAGE SUMMARY

1st FLOOR:	3,353
2nd FLOOR:	649
TOTAL LIVING:	4,046
GARAGE:	922
FRONT PORCH:	172
REAR PORCH:	804
TOTAL SLAB:	5,251
TOTAL FRAME:	5,944

○ FIRST FLOOR PLAN  
43'-7" x 65'-3"