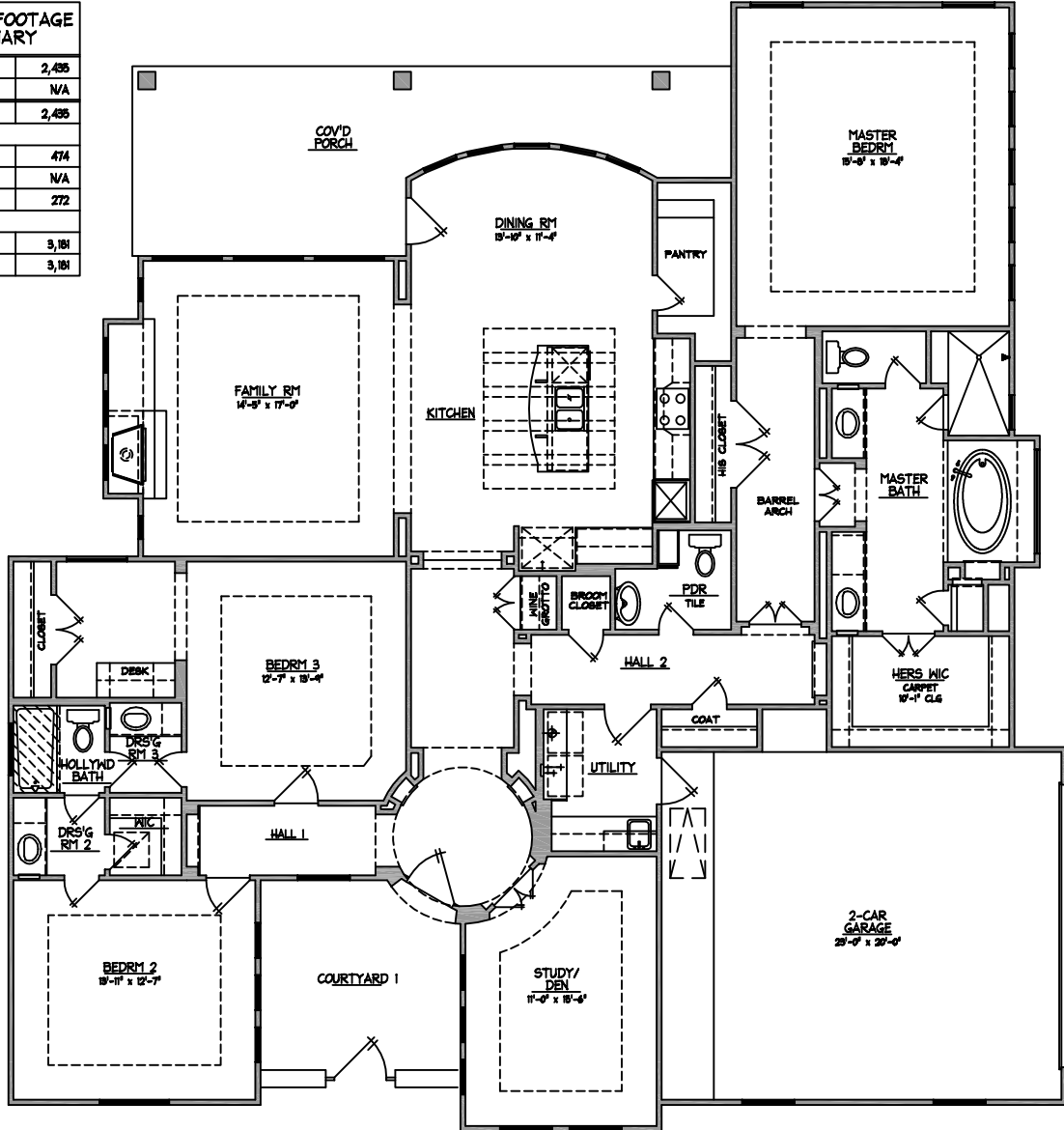


# THE SOMERTON

SQUARE FOOTAGE SUMMARY	
1st FLOOR:	2,495
2nd FLOOR:	N/A
TOTAL LIVING:	2,495
GARAGE:	474
FRONT PORCH:	N/A
REAR PORCH:	272
TOTAL SLAB:	3,181
TOTAL FRAME:	3,181



○ FLOOR PLAN  
60'-11" x 64'-11"