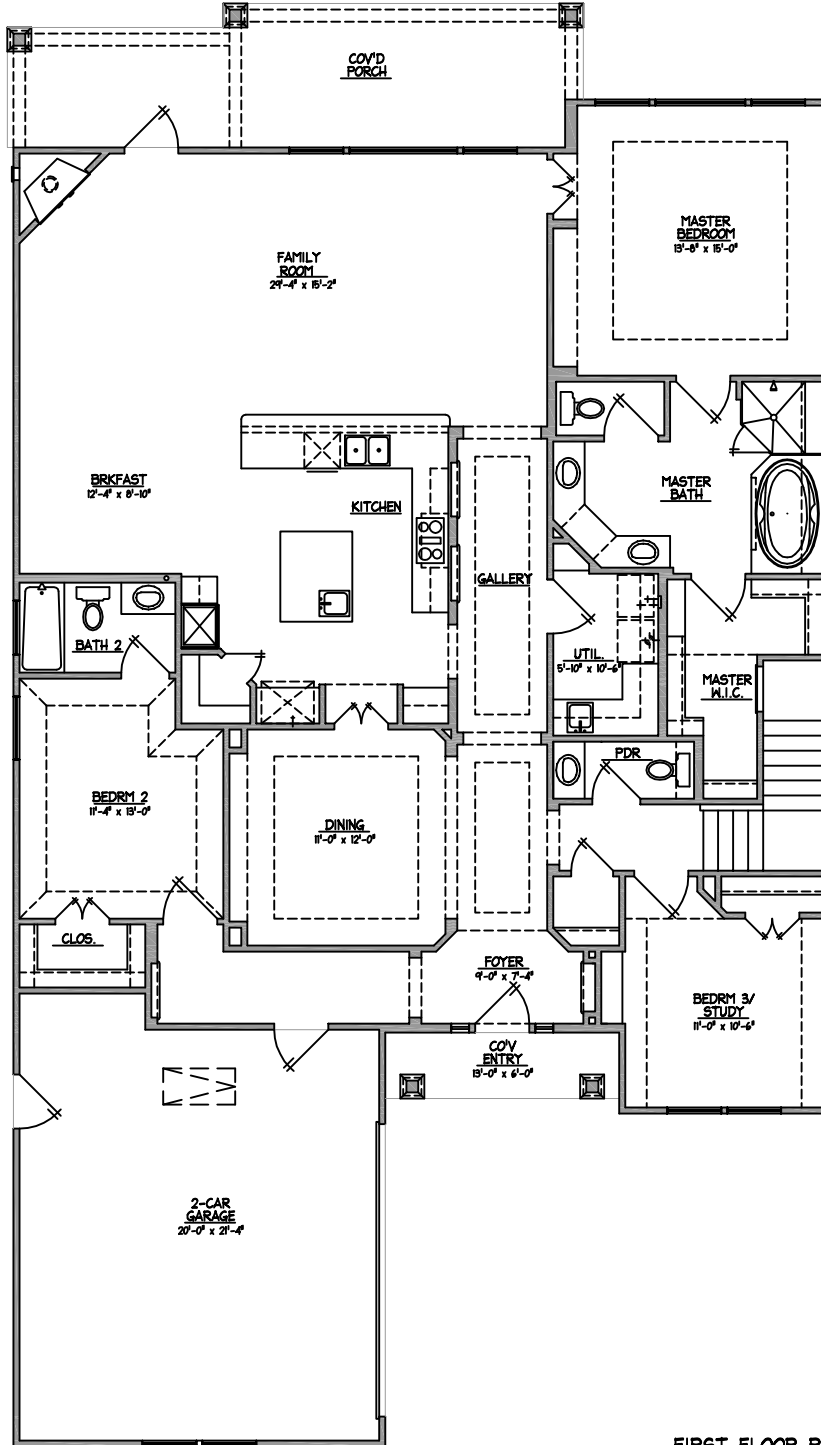


# The Wyndemere



SQUARE FOOTAGE SUMMARY	
1st FLOOR:	2,130
2nd FLOOR:	852
TOTAL LIVING:	2,982
GARAGE:	493
FRONT PORCH:	48
REAR PORCH:	156
TOTAL SLAB:	2,827
TOTAL FRAME:	2,679

○ FIRST FLOOR PLAN  
45'-8" x 80'-2"

